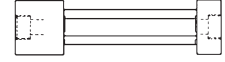


Cylindrical Plug Gages



Reversible Style

| SIZE ABOVE – INCLUDING | CLASS | TOL. | GO OR NO GO LENGTH | HANDLE # |
|------------------------|-------|--------|--------------------|----------|
| .010 to .075 | XX | .00002 | | 1W |
| .254mm to 1.91mm | X | .00004 | 2" | 1W |
| | Y | .00007 | | 1W |
| | Z | .00010 | | 1W |
| .075 to .180 | XX | .00002 | | 2W |
| 1.91mm to 4.57mm | X | .00004 | 2" | 2W |
| | Y | .00007 | | 2W |
| | Z | .00010 | | 2W |
| .180 to .281 | XX | .00002 | | 3W |
| 4.57mm to 7.14mm | X | .00004 | 2" | 3W |
| | Y | .00007 | | 3W |
| | Z | .00010 | | 3W |
| .281 to .406 | XX | .00002 | | 4W |
| 7.14mm to 10.31mm | X | .00004 | 2" | 4W |
| | Y | .00007 | | 4W |
| | Z | .00010 | | 4W |
| .406 to .510 | XX | .00002 | | 5W |
| 10.31mm to 12.95mm | X | .00004 | 2" | 5W |
| | Y | .00007 | | 5W |
| | Z | .00010 | | 5W |
| .510 to .635 | XX | .00002 | | 6W |
| 12.95mm to 16.13mm | X | .00004 | 2" | 6W |
| | Y | .00007 | | 6W |
| | Z | .00010 | | 6W |
| .635 to .760 | XX | .00002 | | 7W |
| 16.13mm to 19.30mm | X | .00004 | 2" | 7W |
| | Y | .00007 | | 7W |
| | Z | .00010 | | 7W |
| .760 to .825 | XX | .00002 | | 8W |
| 19.30mm to 20.96mm | X | .00004 | 2" | 8W |
| | Y | .00007 | | 8W |
| | Z | .00010 | | 8W |
| .825 to 1.010 | XX | .00003 | | 8W |
| 20.96mm to 25.65mm | X | .00006 | 2" | 8W |
| | Y | .00009 | | 8W |
| | Z | .00012 | | 8W |

Trilock Style

| SIZE ABOVE – INCLUDING | CLASS | TOL. | GO LENGTH | NO GO LENGTH | HANDLE # |
|------------------------|-------|---------|-----------|--------------|----------|
| .760 to .947 | XX | .00003 | | | 2-1/2 |
| 19.30mm to 24.05mm | X | .00006 | 1-1/4" | 3/4" | 2-1/2 |
| | Y | .00009 | | | 2-1/2 |
| | Z | .00012 | | | 2-1/2 |
| .947 to 1.135 | XX | .00003 | | | 3-1/2 |
| 24.05mm to 28.83mm | X | .00006 | 1-3/8" | 3/4" | 3-1/2 |
| | Y | .00009 | | | 3-1/2 |
| | Z | .00012 | | | 3-1/2 |
| 1.135 to 1.510 | XX | .00003 | | | 4-1/2 |
| 28.83mm to 38.35mm | X | .00006 | 1-1/2" | 3/4" | 4-1/2 |
| | Y | .00009 | | | 4-1/2 |
| | Z | .00012 | | | 4-1/2 |
| 1.510 to 2.010 | XX | .00004 | | | 5-1/2 |
| 38.35mm to 51.05mm | X | .00008 | 1-7/8" | 7/8" | 5-1/2 |
| | Y | .00012 | | | 5-1/2 |
| | Z | .00016 | | | 5-1/2 |
| 2.010 to 2.510 | XX | .00004 | | | 6 |
| 51.05mm to 63.75mm | X | .00008 | 2" | 7/8" | 6 |
| | Y | .00012 | | | 6 |
| | Z | .00016 | | | 6 |
| 2.510 to 3.510 | XX | .00005 | | | 7 |
| 63.75mm to 89.15mm | X | .00010 | 2" | 1" | 7 |
| | Y | .00015 | | | 7 |
| | Z | .00020 | | | 7 |
| 3.510 to 4.510 | XX | .00005 | | | 7 |
| 89.15mm to 114.55mm | X | .00010 | 2-1/8" | 1" | 7 |
| | Y | .00015 | | | 7 |
| | Z | .00020 | | | 7 |
| 4.510 to 6.510 | XX | .000065 | | | 7 |
| 114.55mm to 165.35mm | X | .00013 | 2-1/8" | 1" | 7 |
| | Y | .00019 | | | 7 |
| | Z | .00025 | | | 7 |
| 6.510 to 8.010 | XX | .00008 | | | 7 |
| 165.35mm to 203.45mm | X | .00016 | 2-1/8" | 1" | 7 |
| | Y | .00024 | | | 7 |
| | Z | .00032 | | | 7 |

Direction of Tolerances

GO – Unilateral (Plus)
NO GO – Unilateral (Minus)

Chrome and Carbide
also available

CALL SWANSON FOR PRICING

How to Order

Please specify:

1. Quantity desired.
2. Exact diameter(s).
3. Tolerance.
4. GO or NO GO.
5. Handles (Single or Double End).
6. Marking.